



baja designs[®]
The Scientists of Lighting

2007-2013 Chevrolet Silverado Universal 20” light bar Instructions



185 Bosstick Boulevard • San Marcos • CA • 92069

Phone 760-560-2252 • Fax 760-560-0383

info@bajadesigns.com • www.bajadesigns.com



baja designs[®]
The Scientists of Lighting

LIMITED LIFETIME WARRANTY

Baja Designs proudly offers a LIFETIME WARRANTY against manufacturer's defect on all the products that we manufacture.

These are comprehensive warranties; other than the exclusions below – you're covered. If your LED or HID bulb burns out, you're covered. Additionally, cutting off our connector or changing your lenses does not automatically void your warranty.

Exclusions:

Installation errors, abuse, misuse or crash damage. You must be the original owner of the product and can supply proof of purchase.

Baja Designs manufactures its own products as well as resells products manufactured by others. Baja Designs makes no express or implied warranties on products not manufactured by Baja Designs including without limitation any warranties or merchantability and fitness for a purpose. We will however, pass on all warranties made by the manufacturer, who has sole responsibility for performing such warranties.

Baja Designs will pay the freight if your product is less than 90 days old, otherwise defective products must be returned to Baja Designs, Inc., freight prepaid. At our option, we will repair or replace items in question and return them at no charge. If the identical product is no longer available, we will replace with a similar product of equal value. Baja Designs Inc. will not be responsible for any indirect or consequential damages in connection with defective merchandise.

Items purchased through a Baja Designs authorized dealer must be returned through the dealer. Only available on LED auxiliary lights and product must be in sellable condition at MSRP. Product that has been damaged in any way after the original purchase date will be excluded from this guarantee.

Indemnification:

Buyer hereby acknowledges off-roading, racing and driving at night are dangerous activities and that the products and/or supplies purchased from Baja Designs are used in an inherently dangerous activity that may endanger life and limb; and in no event shall the seller, or seller's heirs and assigns, be held liable for consequential damages, nor shall seller's liability on any claim for damages arising out of or connected with the sale, delivery, or use of purchased products and/or supplies exceed the purchase price of the products and/or supplies.



baja designs
The Scientists of Lighting

Silverado Universal 20" S8/OnX6 bracket kit

Tools Required

7/16" Socket

7/16" Wrench

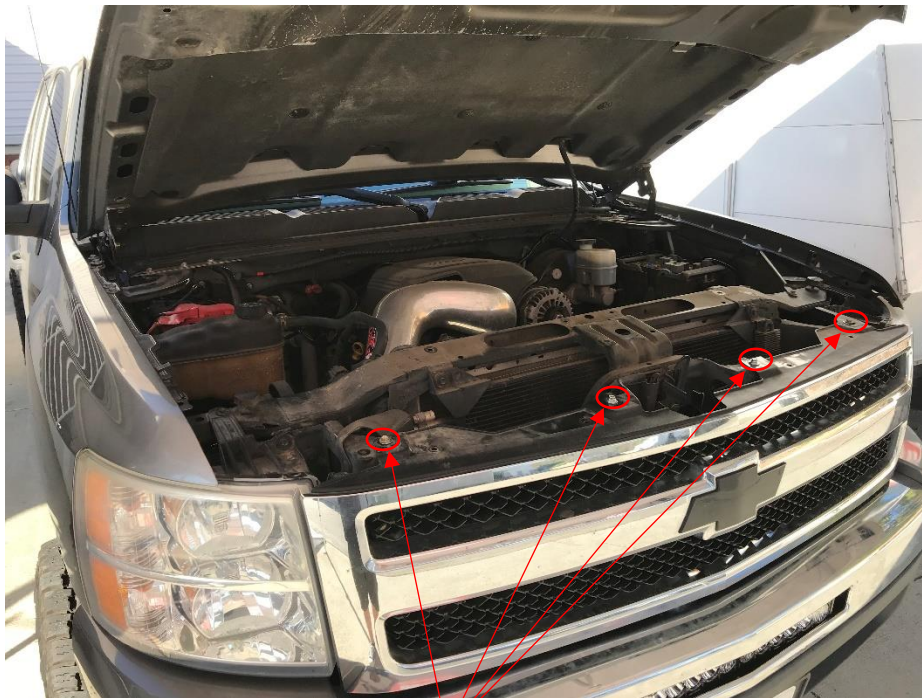
10mm Socket

Standard Screwdriver (Flat head)

2 Zip Ties, or string.

Pliers

1. Begin by opening the hood and locating the four hex head bolts along the top of the grill with the 10mm socket. Remove bolts and set aside.



10mm Hex Head
Grill bolts

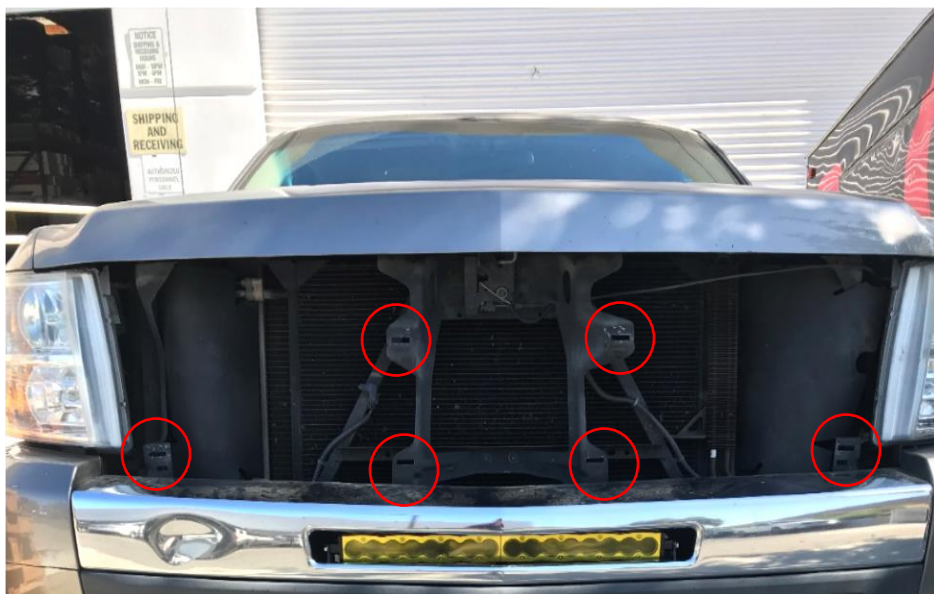


baja designs
The Scientists of Lighting

2. Release the grill clips by gently squeezing each on the top and bottom with pliers. Start either on the driver or passenger side and work your way across while gently “peeling” off the grill. The center of the top of grill must be lifted slightly to release it from the core support.



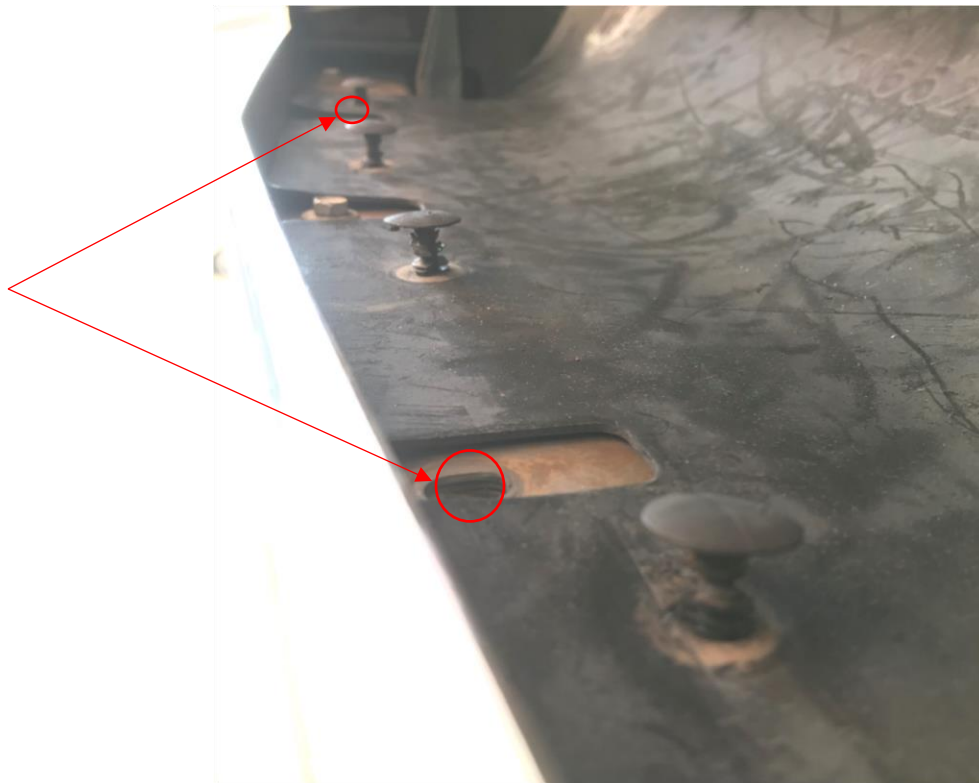
3. There are 6 clips total that will need to be removed.





baja designs
The Scientists of Lighting

4. Inside the bumper cavity where the light will be mounted, use a standard screwdriver to pry up the plastic push fasteners that hold the lower rubber radiator shrouding. Pull the pins out with pliers. Remove the two 10mm hex head bolts from the locations circled in red.



5. Push the rubber radiator shroud downward so there is clearance to insert the light bar inbetween the radiator and the mounting location inside the bumper.





baja designs
The Scientists of Lighting

6. Carefully place the light bar through the opening and tie it to the core support temporarily. It may be a good idea to have assistance, or wrap the light with a protective material (i.e. plastic wrap).



7. Re-attach the rubber radiator shrouding flap with all the plastic push fasteners except the holes that are adjacent to the bolt holes from step 4 (see image below). Place the bracket over the mounting holes. With the 1.25" long hardware provided, orient the 1/4" bolt head with a 10mm washer above the top surface of the bracket and insert it into the mounting hole. It may be necessary to have assistance when attaching the underside washers and nuts. Center the bracket before tightening.





baja designs[®]
The Scientists of Lighting

8. Now detach the light bar from the core support and align it into the mounting bracket. Using the other ¼" bolts with the small ¼" washers, hand thread the bolts through the bracket into either side of the light bar. Using a 7/16" wrench, tighten the bolts with the light at the desired angle.
9. Replace the grill by gently pressing it back into the clip fastener locations from step 3. Fasten the top of the grill with the four bolts from step 1.

Re-torque all fasteners after 100 miles.

See the instructions supplied with the wiring harness to complete wiring needs.

Your install is now complete! Thank you for choosing Baja Designs.