



**OEM, 11-16 Ford Super Duty S8 Grille mount Kit 63-0809**

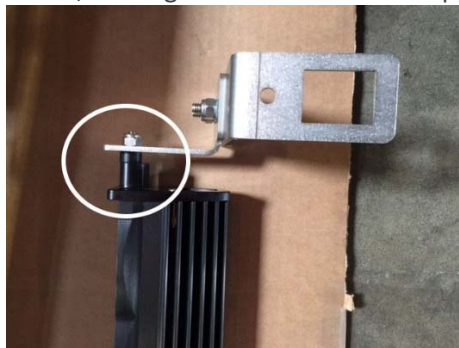
1. Start by removing the (4) 10mm bolts. Then reach down to the bottom of the grille on the inside and push in the metal retaining clips to release the grille.



2. Use snips to cut the bridge part out of the grille as shown in the picture. You have the option of removing the entire plastic grille with snips for an un-obstructed view and for maximum performance of the light.



3. Remove the factory stud on the S8 light bar and install the supplied longer one.
4. Assemble the two piece brackets using the supplied 1/4x20 bolts. Leave them finger tight to allow for adjustability.
5. Install brackets on the light as pictured, making sure to include the supplied aluminum spacer as shown.



6. Now install the light and brackets onto the grille checking fitment. Tighten the 7/16 nut on the end of the light. It will not be accessible once installed.



**baja designs**  
The Scientists of Lighting

- Using the supplied M6 hardware attach the bracket to the grille shroud as pictured. Make sure the light is centered in opening and the correct angle is achieved. The light should be sitting flush with the back of the grille. Once this is done you may now tighten the 1/4x20 bolts holding the two piece brackets together.



- Now re-install the factory grille. Checking fitment. On certain year Super Duty's the horn sits lower than others. Slightly flex the bracket up and out of the way allowing for added clearance.
- Using the factory 10mm bolts, secure the grille back into place
- Wiring: Using the supplied upfitter wiring adapter run the harness to the factory upfitter wires located behind the fuse block against the driver's side firewall. "See owner's manual for proper connections and wiring to the OEM switches".
  - White wire is for the main power
  - Black wire is your ground.
  - Green wire is if for the Amber backlit feature on the S8 and will be on a separate up fitter switch.
- Your Install is now complete. Thank You for choosing Baja Designs: The Scientists of Lighting.

